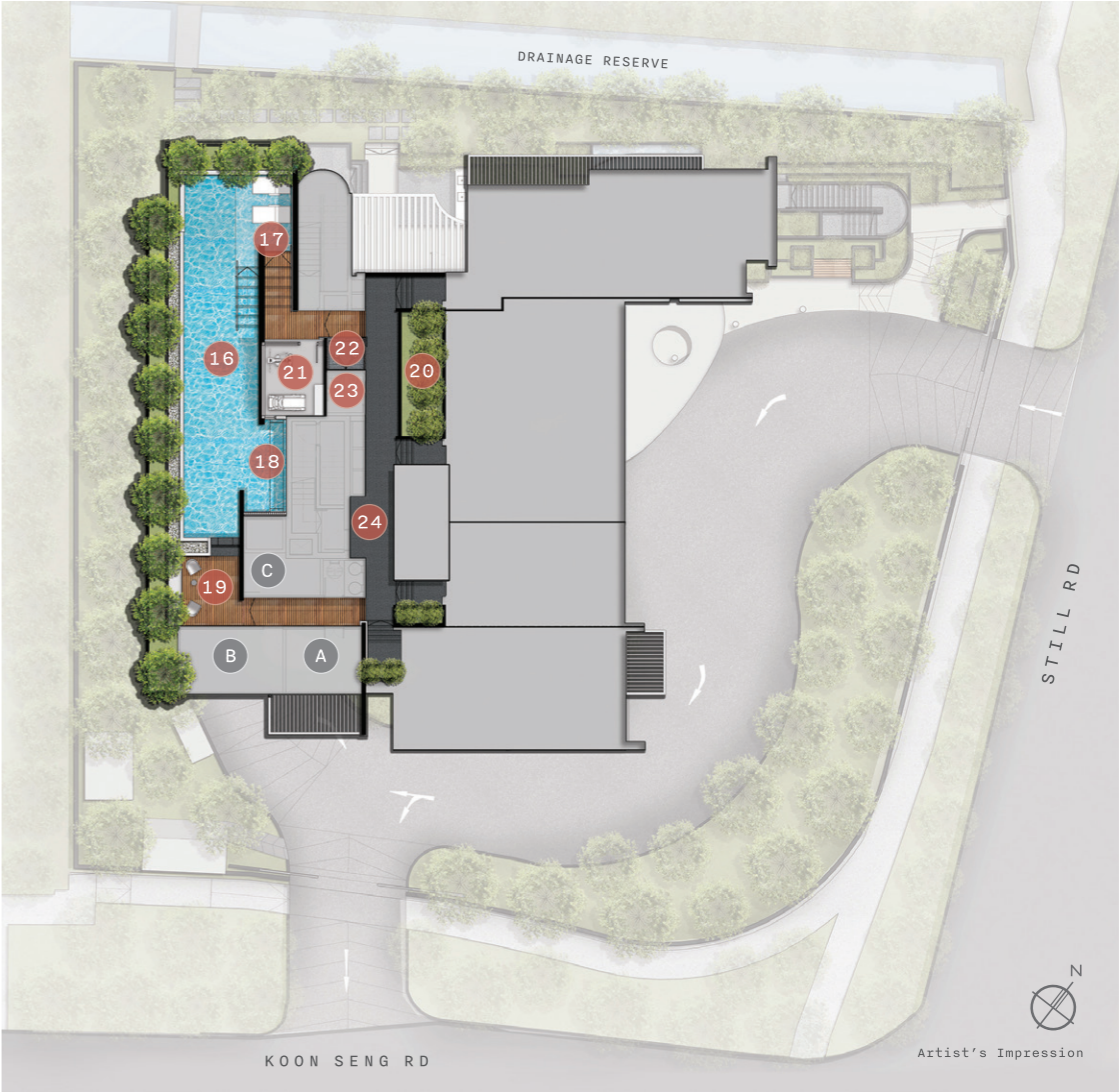


SITE PLAN



- | | | |
|---------------------------|-------------------------|-----------------------|
| 1 DROP-OFF PLAZA | 6 BBQ DECK | 11 CASCADING WATER |
| 2 LIFT LOBBY | 7 PEDESTRIAN ENTRY/EXIT | 12 YLANG YLANG GARDEN |
| 3 MULTI-PURPOSE ROOM | 8 STEPPING STONE | 13 ULAM GARDEN |
| 4 ACCESSIBLE TOILET | 9 EDIBLE GARDEN | 14 KEDONGDONG GARDEN |
| 5 MCST OFFICE/GUARD HOUSE | 10 FOLIAGE GARDEN | 15 CHIN CHOW GARDEN |

ATTIC PLAN



- | | | |
|------------------|----------------------|-----------------------|
| 16 LAP POOL | 20 EDIBLE GARDEN | 24 LIFT LOBBY |
| 17 AQUA DECK | 21 INDOOR GYM | A WATER TANK ROOM |
| 18 JACUZZI | 22 OUTDOOR SHOWER | B OUTDOOR GENSET ROOM |
| 19 POOL DECK BAR | 23 ACCESSIBLE TOILET | C PUMP ROOM |

YOUR FREEHOLD HOME

	01	02	03	04	05	06	07
A	TYPE D(PH)	TYPE D1(PH) Premium	TYPE B3(PH)	TYPE C3(PH) Premium	LAP POOL / INDOOR GYM		
5					TYPE B2	TYPE B	TYPE C
4	TYPE C1	TYPE C2 Premium	TYPE A	TYPE B1	TYPE B2	TYPE B	TYPE C
3	TYPE C1	TYPE C2 Premium	TYPE A	TYPE B1	TYPE B2	TYPE B	TYPE C
2	TYPE C1	TYPE C2 Premium	TYPE A	TYPE B1	TYPE B2	TYPE B	TYPE C
1	COMMUNAL FACILITIES						
B	CAR PARKING						

- 1-Bedroom
- 2-Bedroom
- 2-Bedroom + 1
- 2-Bedroom + 1
- 3-Bedroom
- 3-Bedroom + 1
- 3-Bedroom + 1 (Premium)
- 2-Bedroom Penthouse
- 3-Bedroom (Premium) Penthouse
- 4-Bedroom + 1 Penthouse
- 4-Bedroom (Premium) Penthouse



- F FRIDGE
- WD WASHER DRYER
- DB DISTRIBUTION BOX
- ST STORAGE

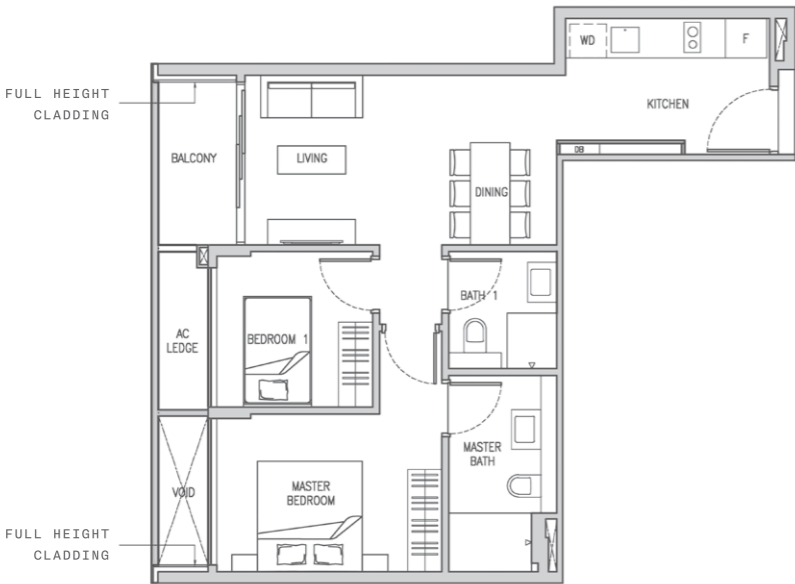


Area includes air conditioner (AC) ledge, balcony, roof terrace and strata void where applicable. The above plans are subject to change as may be approved by the relevant authorities. All floor plans are approximate measurements only and are subject to government re-survey. The balcony shall not be enclosed unless with approved balcony screen. The installation and cost of the screen shall be borne by the purchaser.

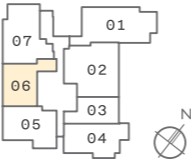
2 - B E D R O O M

TYPE B
73 sqm / 786 sqft

- #02 - 06
- #03 - 06
- #04 - 06
- #05 - 06



- F FRIDGE
- WD WASHER DRYER
- DB DISTRIBUTION BOX
- ST STORAGE

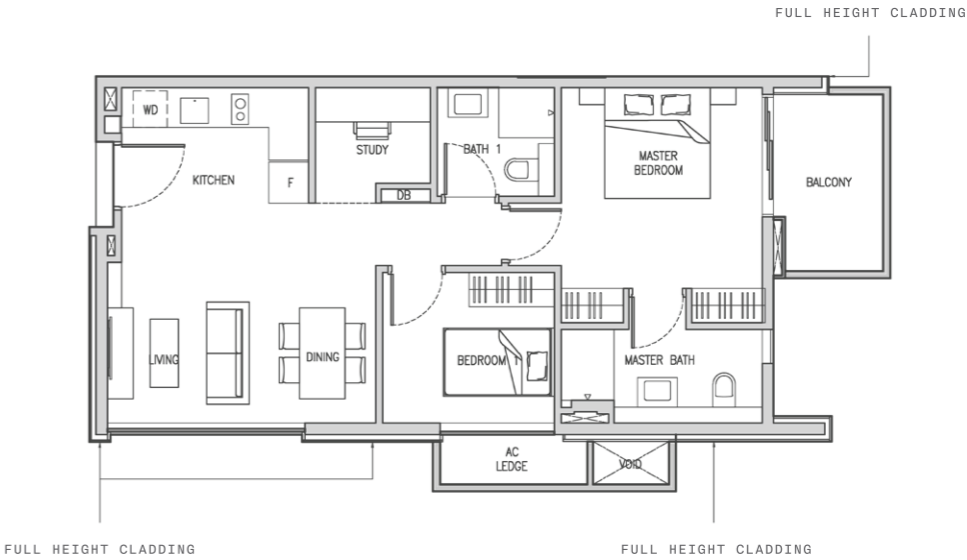


Area includes air conditioner (AC) ledge, balcony, roof terrace and strata void where applicable. The above plans are subject to change as may be approved by the relevant authorities. All floor plans are approximate measurements only and are subject to government re-survey. The balcony shall not be enclosed unless with approved balcony screen. The installation and cost of the screen shall be borne by the purchaser.

2 - B E D R O O M + 1

TYPE B1
81 sqm / 872 sqft

- #02-04
- #03-04
- #04-04



- F FRIDGE
- WD WASHER DRYER
- DB DISTRIBUTION BOX
- ST STORAGE



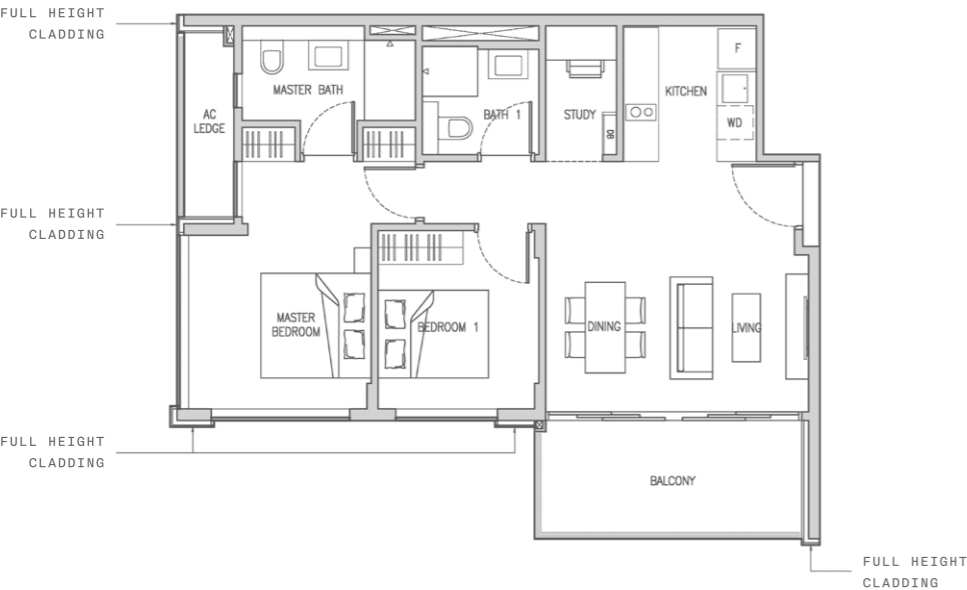
Area includes air conditioner (AC) ledge, balcony, roof terrace and strata void where applicable. The above plans are subject to change as may be approved by the relevant authorities. All floor plans are approximate measurements only and are subject to government re-survey. The balcony shall not be enclosed unless with approved balcony screen. The installation and cost of the screen shall be borne by the purchaser.

2 - BED ROOM + 1

TYPE B2

85 sqm / 915 sqft

- #02 - 05
- #03 - 05
- #04 - 05
- #05 - 05



F FRIDGE
WD WASHER DRYER
DB DISTRIBUTION BOX
ST STORAGE



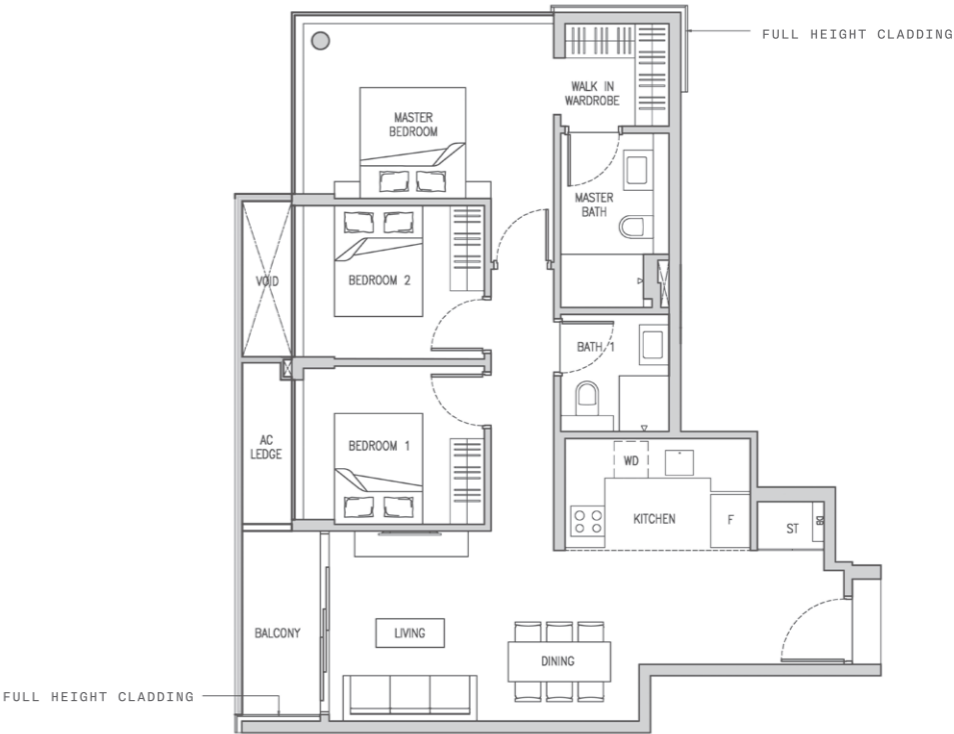
Area includes air conditioner (AC) ledge, balcony, roof terrace and strata void where applicable. The above plans are subject to change as may be approved by the relevant authorities. All floor plans are approximate measurements only and are subject to government re-survey. The balcony shall not be enclosed unless with approved balcony screen. The installation and cost of the screen shall be borne by the purchaser.

3 - BED ROOM

TYPE C

100 sqm / 1076 sqft

- #02 - 07
- #03 - 07
- #04 - 07
- #05 - 07



F FRIDGE
WD WASHER DRYER
DB DISTRIBUTION BOX
ST STORAGE



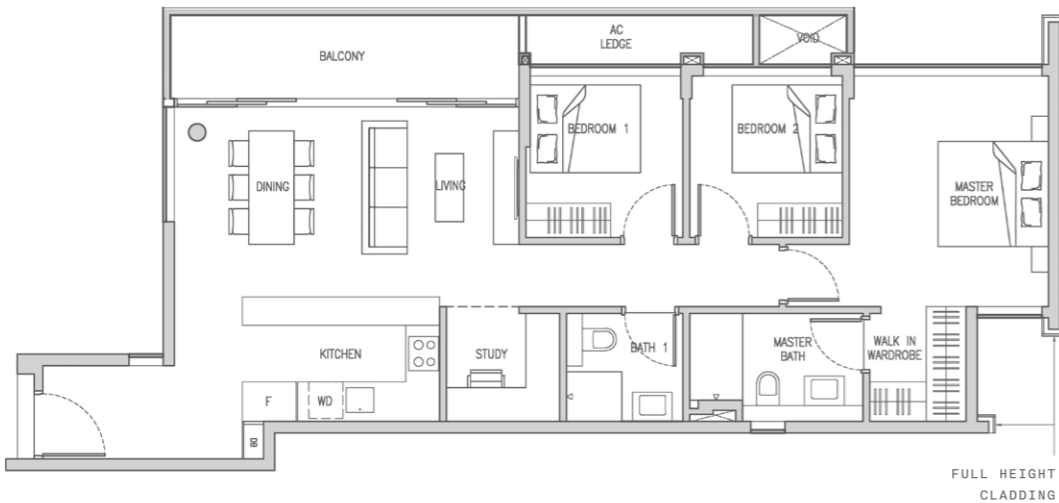
Area includes air conditioner (AC) ledge, balcony, roof terrace and strata void where applicable. The above plans are subject to change as may be approved by the relevant authorities. All floor plans are approximate measurements only and are subject to government re-survey. The balcony shall not be enclosed unless with approved balcony screen. The installation and cost of the screen shall be borne by the purchaser.

3 - BED ROOM + 1

TYPE C1

112 sqm / 1206 sqft

- #02 - 01
- #03 - 01
- #04 - 01



- F FRIDGE
- WD WASHER DRYER
- DB DISTRIBUTION BOX
- ST STORAGE



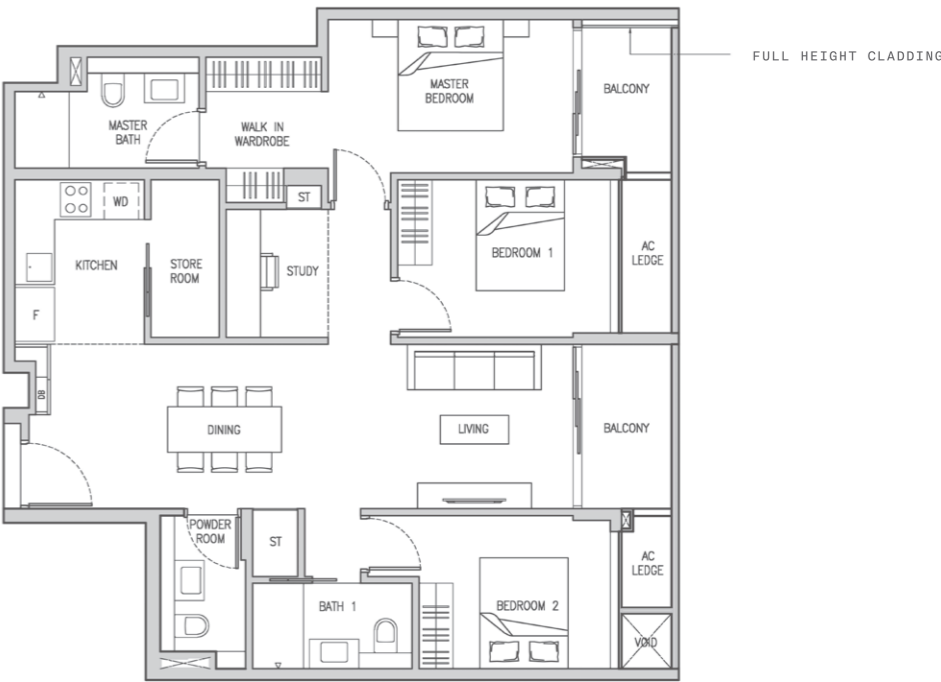
Area includes air conditioner (AC) ledge, balcony, roof terrace and strata void where applicable. The above plans are subject to change as may be approved by the relevant authorities. All floor plans are approximate measurements only and are subject to government re-survey. The balcony shall not be enclosed unless with approved balcony screen. The installation and cost of the screen shall be borne by the purchaser.

3 - BED ROOM + 1 (PREMIUM)

TYPE C2

122 sqm / 1313 sqft

- #02 - 02
- #03 - 02
- #04 - 02



- F FRIDGE
- WD WASHER DRYER
- DB DISTRIBUTION BOX
- ST STORAGE



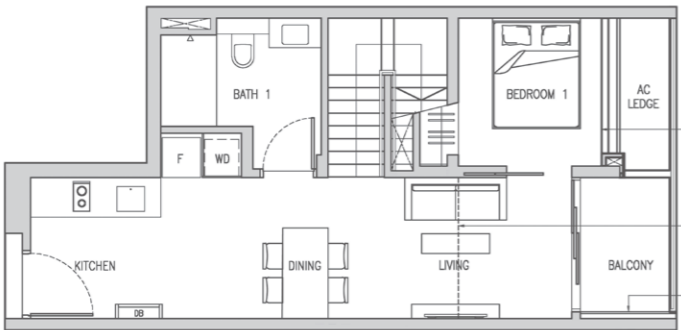
Area includes air conditioner (AC) ledge, balcony, roof terrace and strata void where applicable. The above plans are subject to change as may be approved by the relevant authorities. All floor plans are approximate measurements only and are subject to government re-survey. The balcony shall not be enclosed unless with approved balcony screen. The installation and cost of the screen shall be borne by the purchaser.

2 - BEDROOM PENTHOUSE

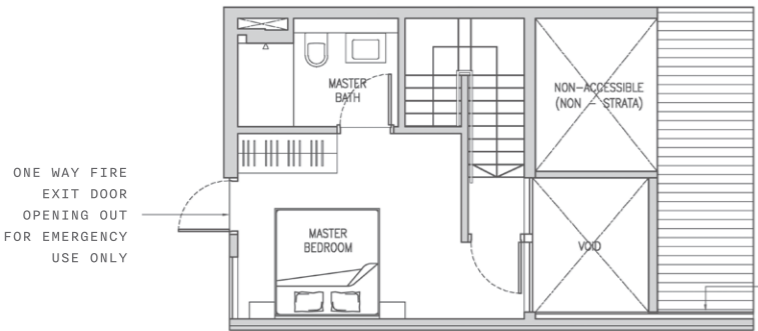
TYPE B3(PH)

91 sqm / 980 sqft

#05-03



LOWER LEVEL



UPPER LEVEL

F FRIDGE
WD WASHER DRYER
DB DISTRIBUTION BOX
ST STORAGE



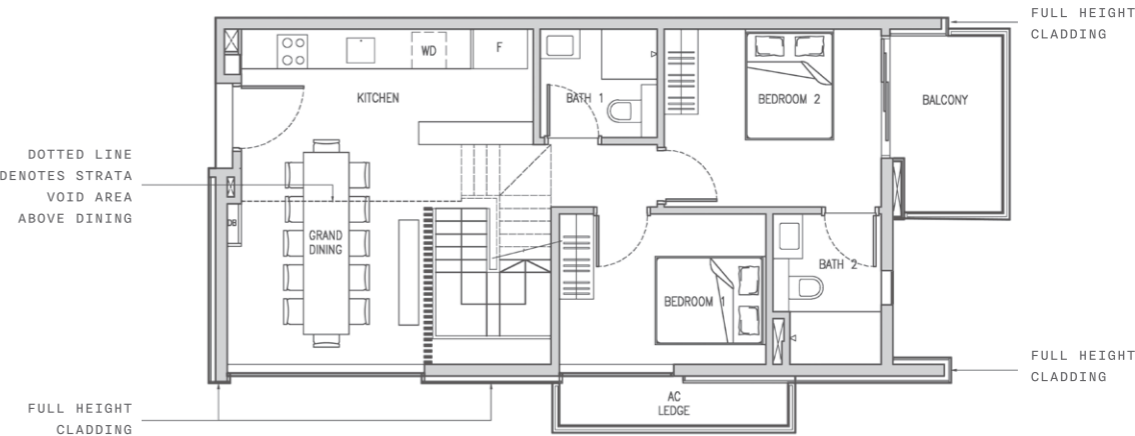
Area includes air conditioner (AC) ledge, balcony, roof terrace and strata void where applicable. The above plans are subject to change as may be approved by the relevant authorities. All floor plans are approximate measurements only and are subject to government re-survey. The balcony shall not be enclosed unless with approved balcony screen. The installation and cost of the screen shall be borne by the purchaser.

3 - BEDROOM (PREMIUM) PENTHOUSE

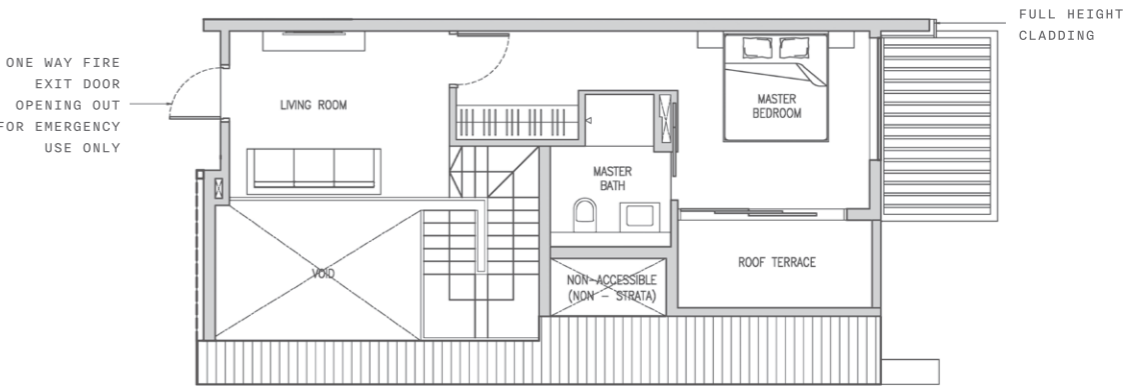
TYPE C3(PH)

137 sqm / 1475 sqft

#05-04

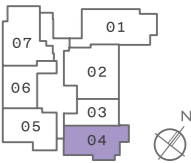


LOWER LEVEL



UPPER LEVEL

F FRIDGE
WD WASHER DRYER
DB DISTRIBUTION BOX
ST STORAGE



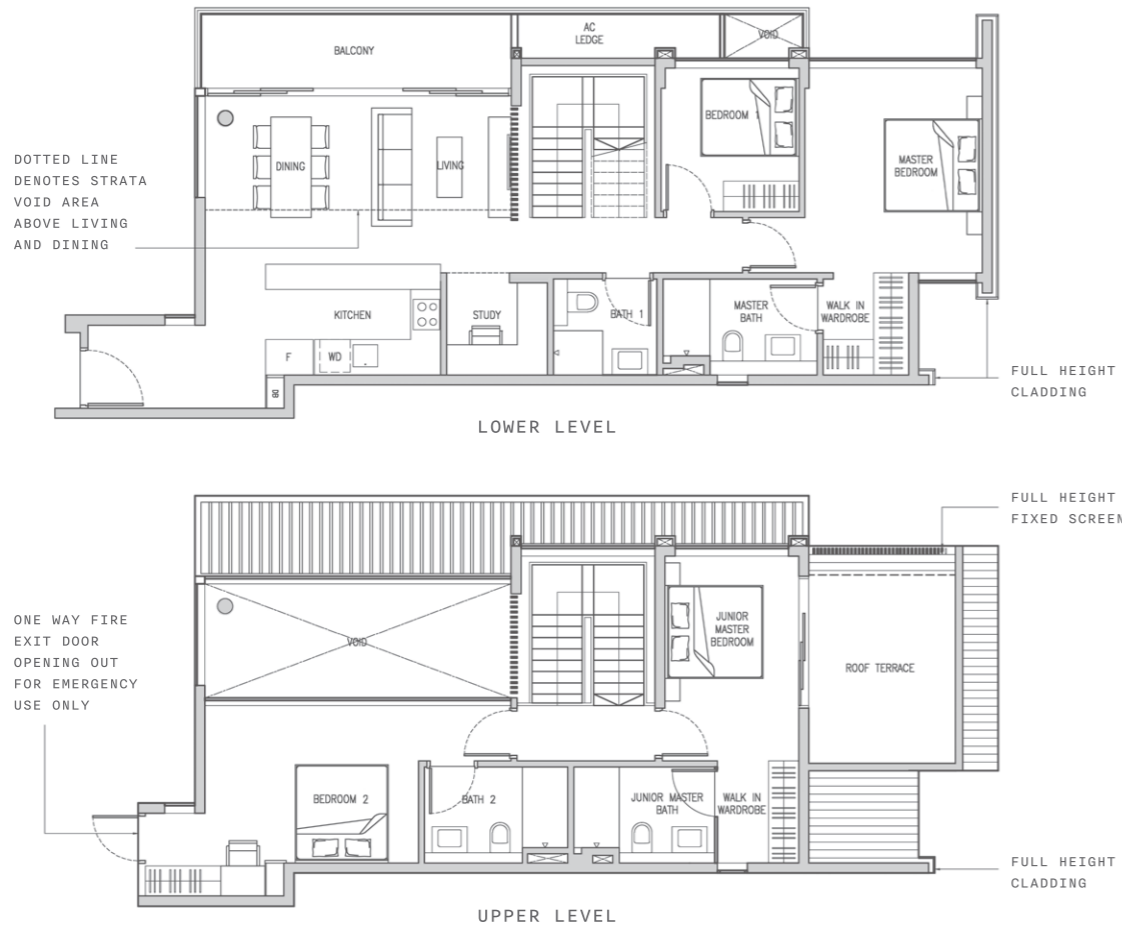
Area includes air conditioner (AC) ledge, balcony, roof terrace and strata void where applicable. The above plans are subject to change as may be approved by the relevant authorities. All floor plans are approximate measurements only and are subject to government re-survey. The balcony shall not be enclosed unless with approved balcony screen. The installation and cost of the screen shall be borne by the purchaser.

4 - BEDROOM + 1 PENTHOUSE

TYPE D(PH)

201 sqm / 2164 sqft

#05-01



F FRIDGE
WD WASHER DRYER
DB DISTRIBUTION BOX
ST STORAGE



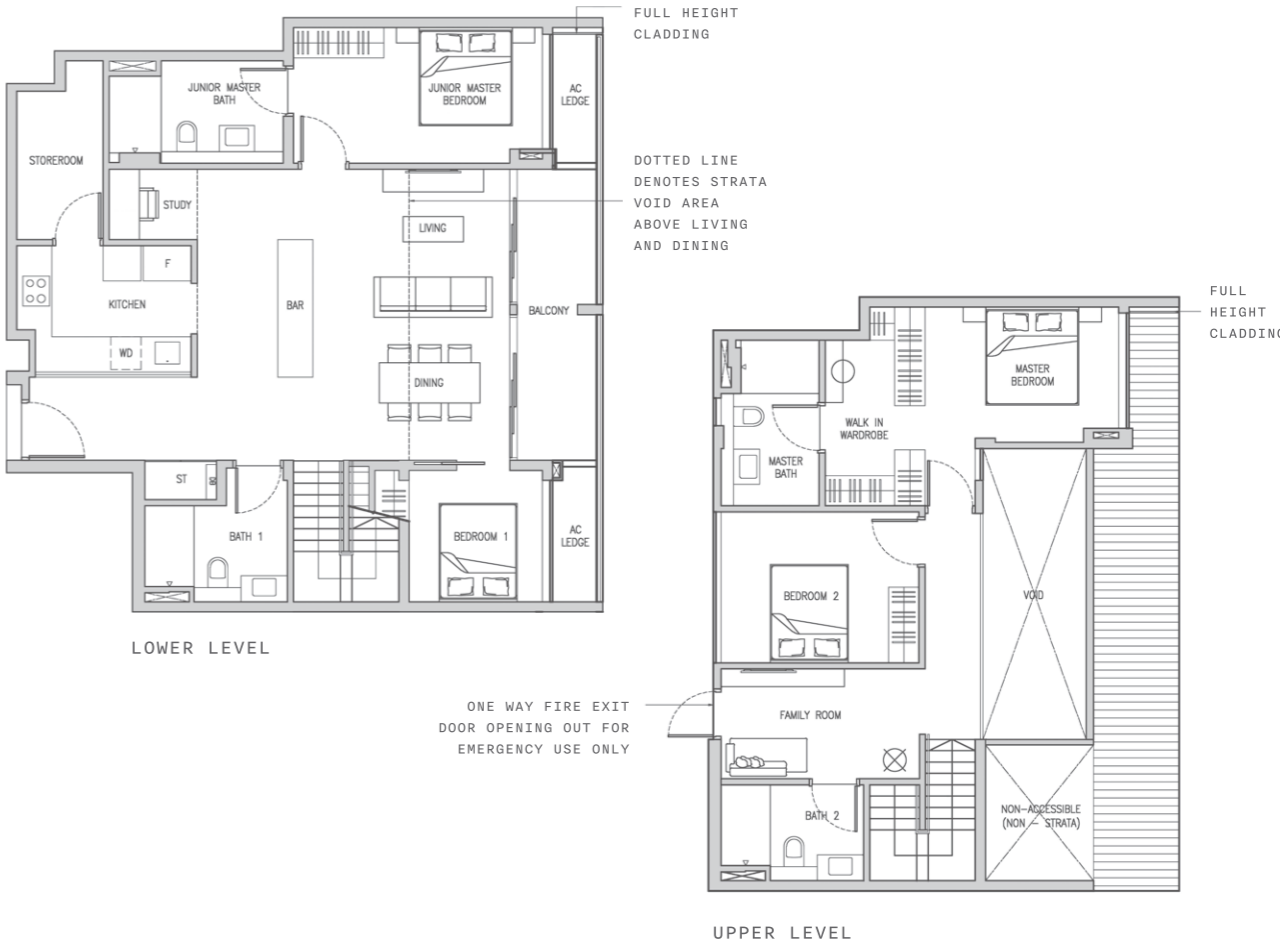
Area includes air conditioner (AC) ledge, balcony, roof terrace and strata void where applicable. The above plans are subject to change as may be approved by the relevant authorities. All floor plans are approximate measurements only and are subject to government re-survey. The balcony shall not be enclosed unless with approved balcony screen. The installation and cost of the screen shall be borne by the purchaser.

4 - BEDROOM (PREMIUM) PENTHOUSE

TYPE D1(PH)

203 sqm / 2185 sqft

#05-02

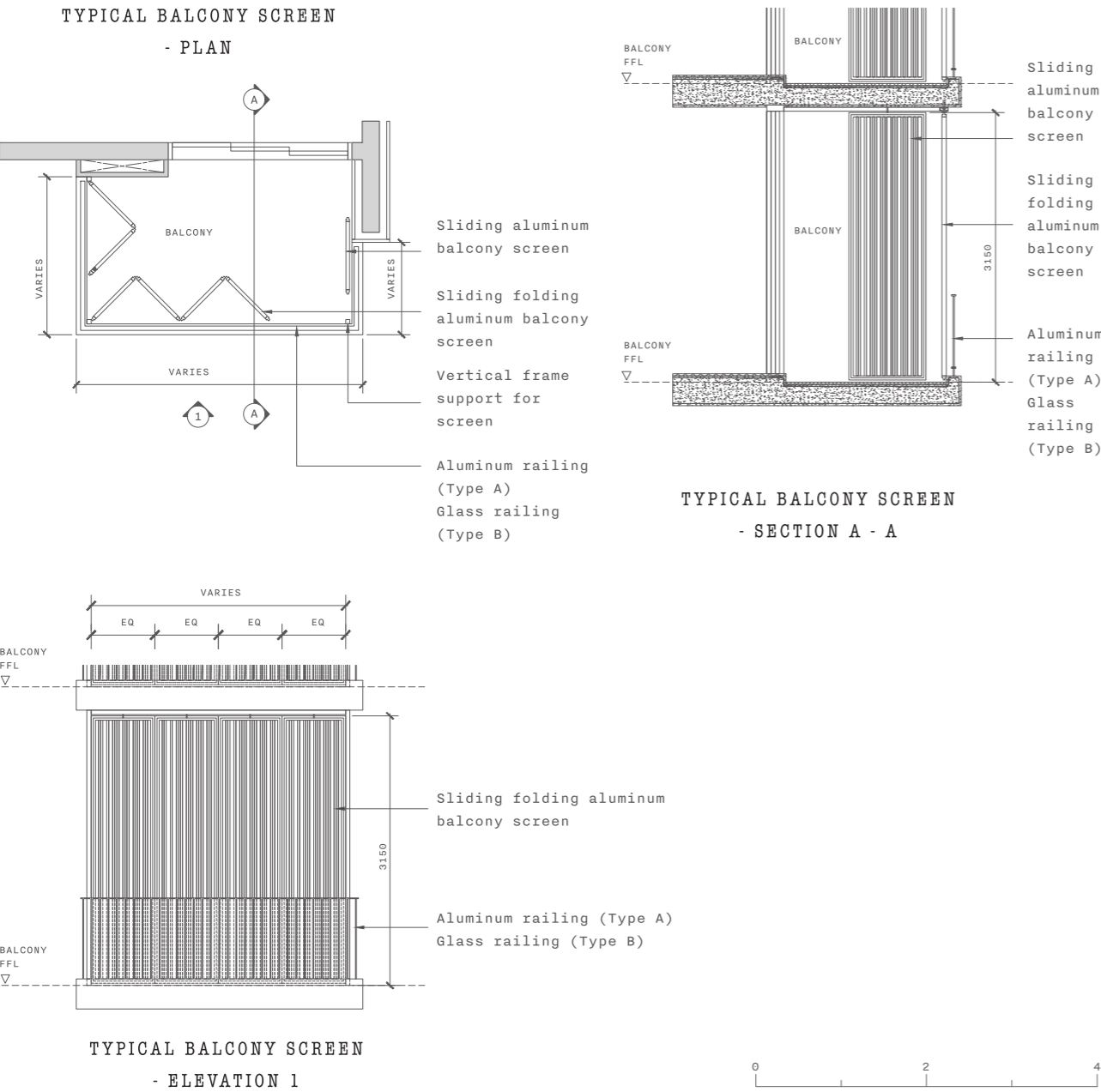


F FRIDGE
WD WASHER DRYER
DB DISTRIBUTION BOX
ST STORAGE



Area includes air conditioner (AC) ledge, balcony, roof terrace and strata void where applicable. The above plans are subject to change as may be approved by the relevant authorities. All floor plans are approximate measurements only and are subject to government re-survey. The balcony shall not be enclosed unless with approved balcony screen. The installation and cost of the screen shall be borne by the purchaser.

APPROVED SCREEN FOR BALCONY



- NOTES:
1. The balcony shall not be enclosed unless with the approved screen as shown above (“approved screen”);
 2. Balcony screen is not provided, the cost of screen and installation of the approved screen shall be borne by the purchaser; and
 3. On-site verification is necessary to obtain actual measurement prior to fabrication and installation of the approved screen.

EQ - Equidistant

HONG HOW GROUP



Real Estate Developer,
Investor & Development Manager

Hong How Group is a Singapore-based estate developer and investor with over 40 years of experience. Our wide experience includes commercial, residential, mixed and industrial developments. We seek transformative projects with special interest in and deep knowledge of shophouse conservation. Hong How Group has won several industry awards in conservation, built quality and greenery.

Our reputation for delivering consistently high quality development of enduring value is sustained by hands-on involvement in the entire development process. We manage all properties held for long term investments to ensure proper upkeep and pre-emptive maintenance. Our Group’s past developments include Lighthouse, Quartet on Ford, 15 Little Road and URA Architectural Heritage (AHA) award-winning 36 & 38 Armenian Street and recently, 292 Joo Chiat Road.



URA AHA 2022
Co-Working offices at 292 Joo Chiat Road in a restored 4-storey 1950s art décor commercial street block near Dunman Road junction.



URA AHA 2010
Off-street shops & SOHO offices at 36 & 38 Armenian Street within a transformed corner cluster of 1930s & 1940s art décor commercial.



Lighthouse
51-unit resort style Lighthouse condominium within short walk to Pasir Ris beach.